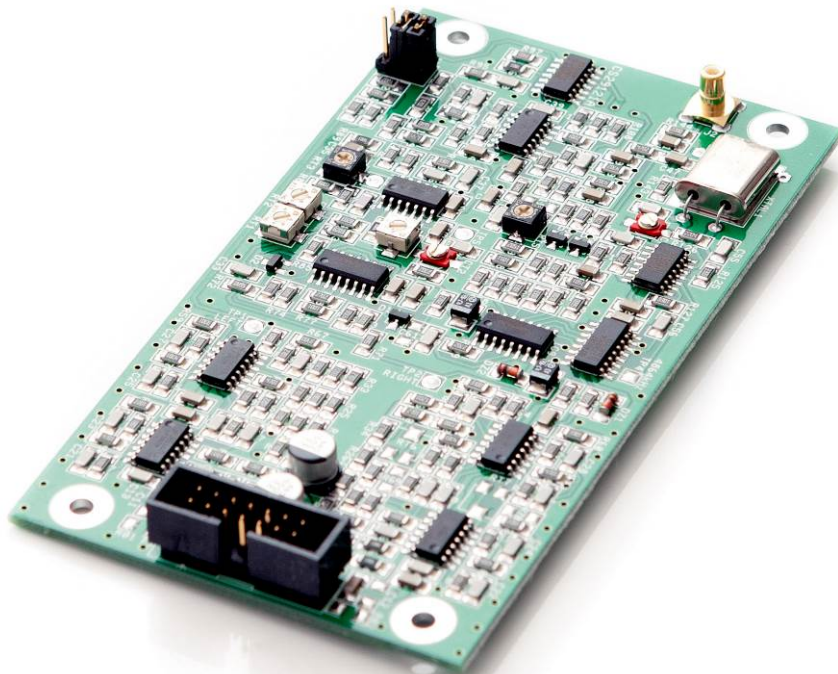


SEXC23COD2

HIGH PERFORMANCE STEREO ENCODER BOARD

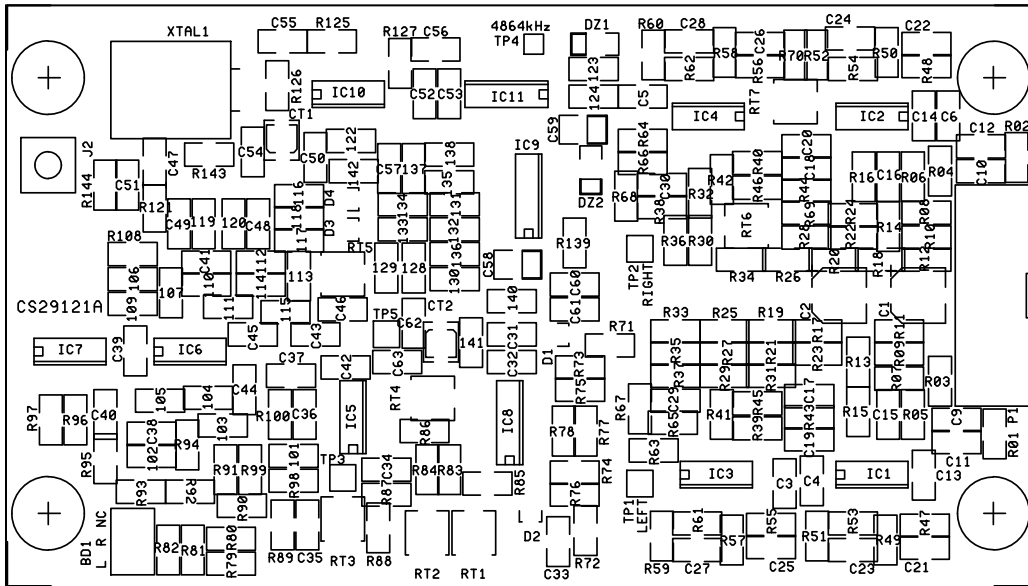


SEXC23COD2 board is a full multiplex stereo encoder specially designed to be incorporated in Sielco transmitters. It incorporates the left and right 15kHz channel filters and the management of the monophonic transmission, but not the pre-emphasis network which is managed by the transmitter. The card is easily installed in the factory or on the field on any Sielco FM or STL Transmitter of the EXCxxGT/GX, EXC18 and EXC19 series.

The use of SMT technology and high-quality components has resulted in a small card similar in performances to professional self-standing coders and with striking features of separation and flatness of the sound channel. The card does not require any calibration on the equipment.

TECHNICAL FEATURES

- | | | | |
|----------------------|--|----------------------------------|-----------------------------------|
| - Audio band-width: | 30 ÷ 15k Hz
(±0,05dB typ, ±0,1dB max) | - Input nominal level: | +6dBm (Z _{in} =100k ohm) |
| - Stereo separation: | >70dB, typ. 400 ÷ 10k Hz
>65dB, min. 30 ÷ 15k Hz | - Output level: | +10dBm (Z _{out} =50 ohm) |
| - M/S crosstalk: | >45dB, tip. 100 ÷ 10k Hz
>35dB, min. 30 ÷ 15k Hz. | - Dynamic headroom: | >6dB |
| - THD distortion: | ≤0,02%, typ. 30 ÷ 7,5k Hz
≤0,05%, max. | - Dc offset on the output: | <20mV |
| - S/N ratio: | >90dB | - Stereo subcarrier suppression: | >55dB min, 60dB typ. |
| | | - Pilot tone frequency: | 19.000 ±0,5 Hz |
| | | - Pilot tone level: | 10% tip. (0 ÷ 14%, reg.) |
| | | - Pilot tone synchro output: | 1V _{pp} ±20% |
| | | - Power supply: | ±12,5V ±5% / 70mA typ |
| | | - Dimensions: | 120,0 x 66,7 mm |



ON BOARD TRIMMER FUNCTION:

- RT1: Right channel crosstalk suppression
- RT2: Left channel crosstalk suppression
- RT3: Mpx gain fine adjust ($\pm 0.3\text{dB}$)
- RT4: Pilot tone level ($0 \div 13\%$)
- RT5: High frequency phase compensation
- CT1: Time base frequency adjust (when present)
- CT2: Phase regulation between stereo subcarrier and pilot tone

CAUTION:

Tampering with any factory adjustment other than slightly modification of pilot tone level may impair overall performances. Declared performances require exact adjustments with state-of-the-art laboratory grade measuring equipment.

INFORMATION HEREBY SUPPLIED ARE AS ACCURATE AS POSSIBLE. HOWEVER, ALL SPECIFICATIONS ARE PURELY INDICATIVE: SIELCO RESERVES THE RIGHT TO CHANGE THEM OR THE CIRCUITRY, WITHOUT ANY PREVIOUS NOTICE, IN ORDER TO IMPROVE THE PRODUCT.